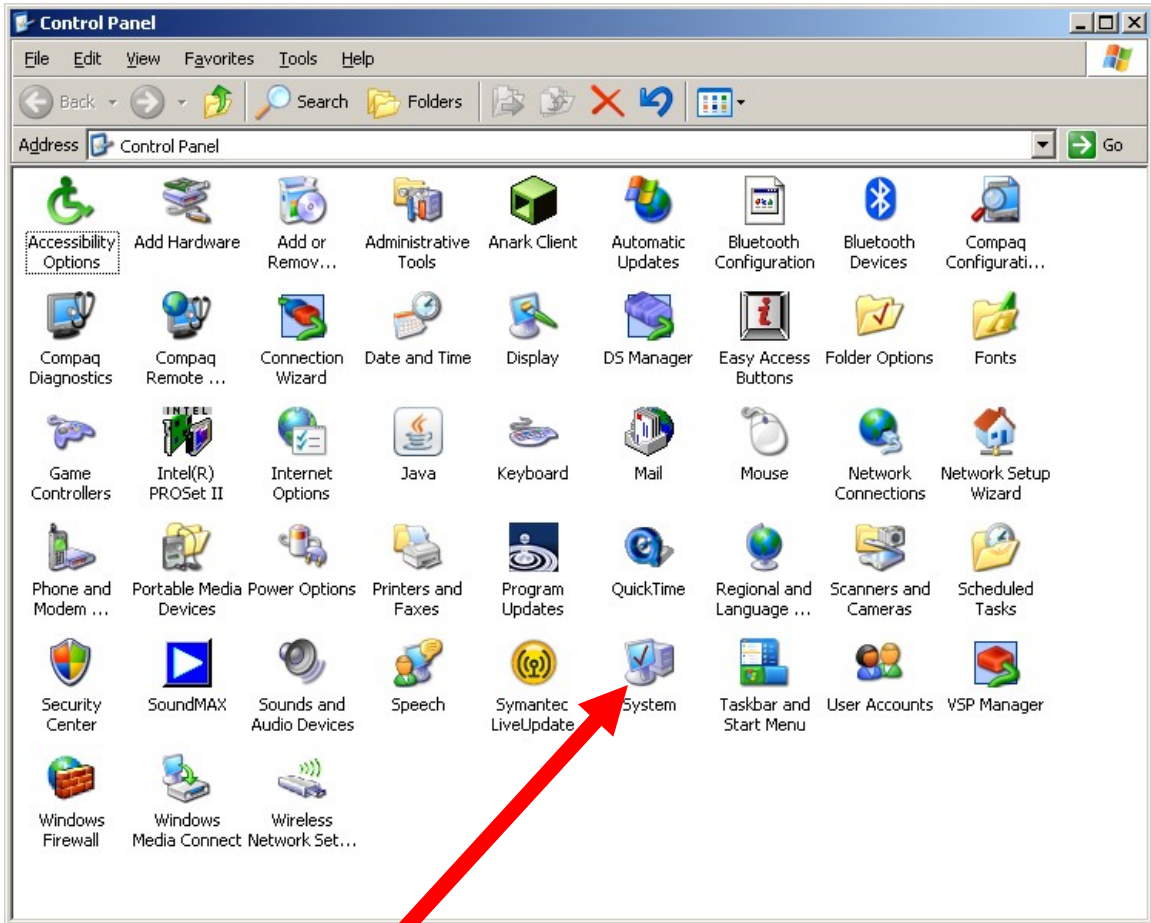
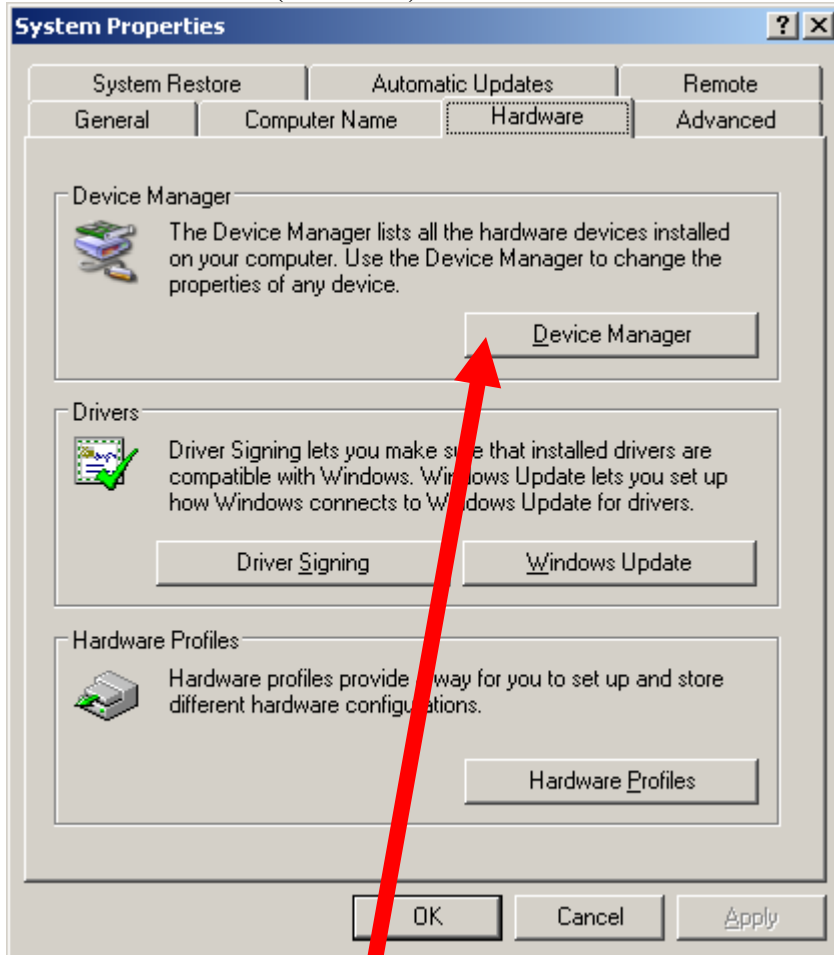


To find the COM # that has been assigned to your USB to COM Port adapter, start with your Windows Control Panel

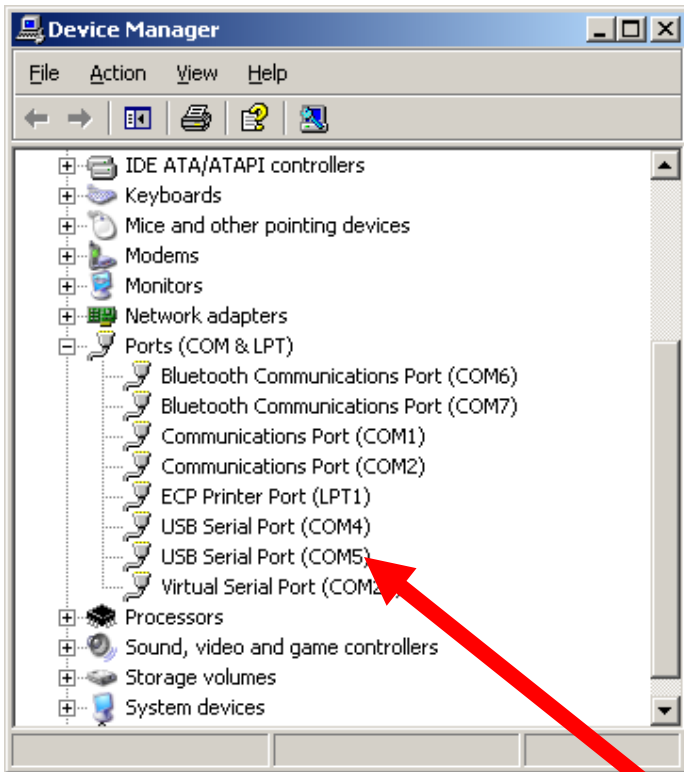


Double Click on “System” and click on “Hardware”

You should see this (or similar) window.



Click on "Device Manager" (depending on your version of Windows, the device manager might be in the middle box instead of the top box)



Click the '+' to the left of Ports (COM & LPT)

Your PC will likely have ONLY ONE USB Serial Port. Depending on the brand of adapter you have, the brand name might be shown. Check with the documentation for the adaptor you have.

Then in the UNIKON for Windows program select "Options" – "Configuration/Set-Up" and enter the COM # displayed in the device manager then click "Save". You might need to close UNIKON for Windows and restart for the COM # change to take effect.

